



## Installation & Operation

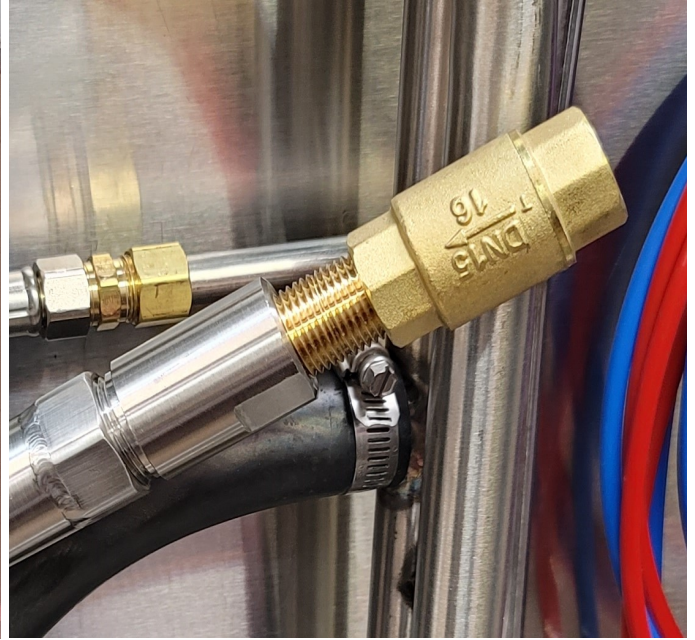
H-1X & UC65e  
Drain Water Tempering Kit  
PN13475.01 Factory Installed

### *Drain Water Tempering Kit - Factory Installation Instructions*

1. Machine ships with wye fitting and CMA Drain Water Tempering valve installed.
2. Remove black plug.



1. DWT with black plug installed



2. Remove black plug

3. Connect cold water line to the in-line check valve. Installer responsible for water connection. Cold water connections not supplied by CMA Dishmachines.
4. Turn on cold water and check for leaks.



## Installation & Operation

H-1X & UC65e  
Drain Water Tempering Kit  
PN13476.01 Field Installed

### *Drain Water Tempering Kit - Field Installation Instructions*

1. Installer must attach the Drain Water Tempering kit to the end of the dishmachine drain line as shown below.



2. Remove black plug and attach cold water line. Drain Water Tempering assembly must be no higher than 12" from the floor.



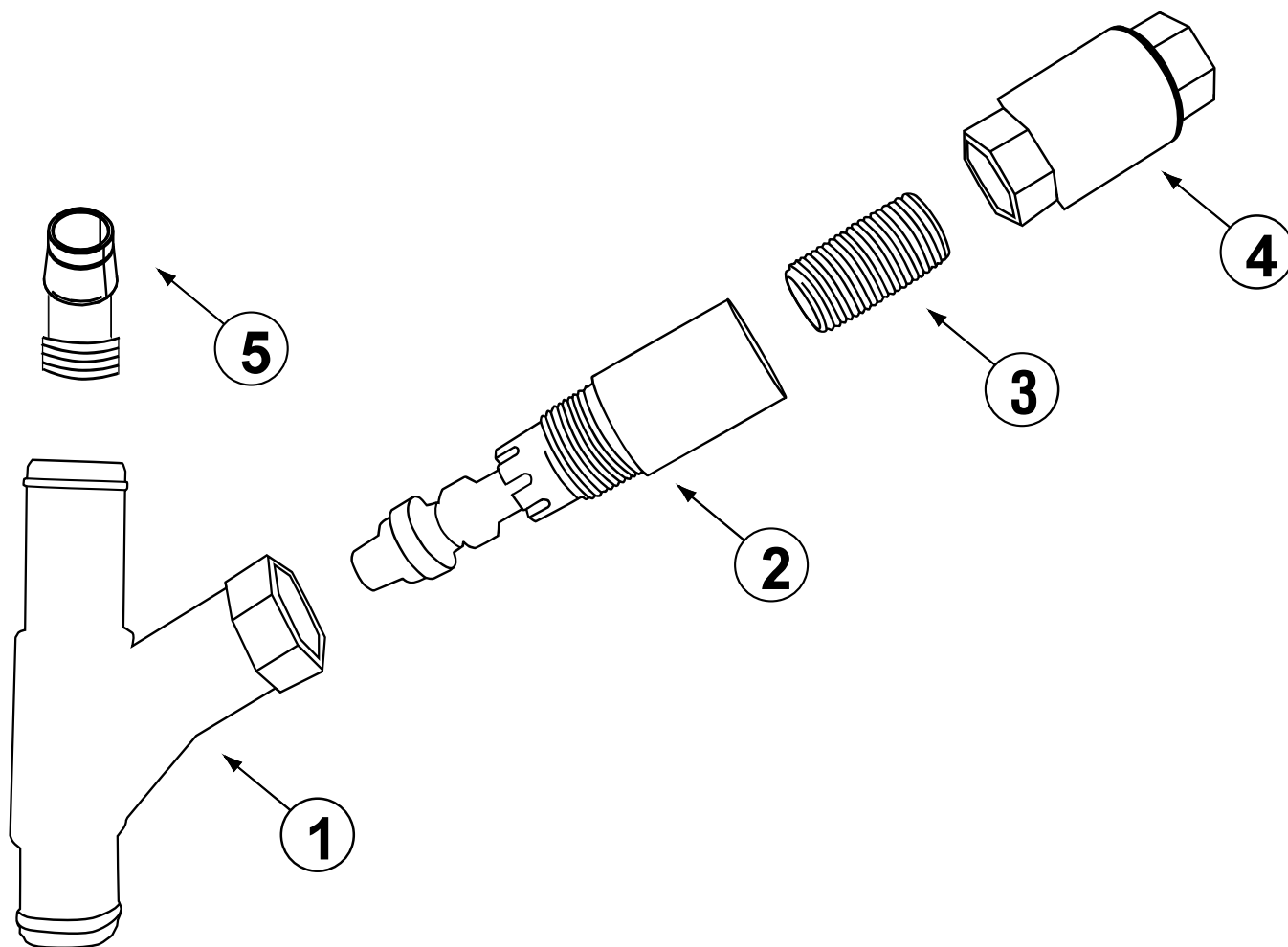


## Parts Manual

### Drain Water Tempering Valve Assembly (Effective 03-2023)

PN13475.01 Factory Installed Kit

PN13476.01 Field Installed Kit



ITEM NO.	NO. REQ'D	P/N	DESCRIPTION
1	1	13470.86	DTV "Y" fitting
2	1	13470.85	Drain Water Tempering Valve
3	1	00742.00	Nipple Brass 1/2 x 1 1/2
4	1	00715.00	1/2 Ball Check Valve
5	1	13472.40	Adapter PVC 1/2 Male x 1/2 Barb