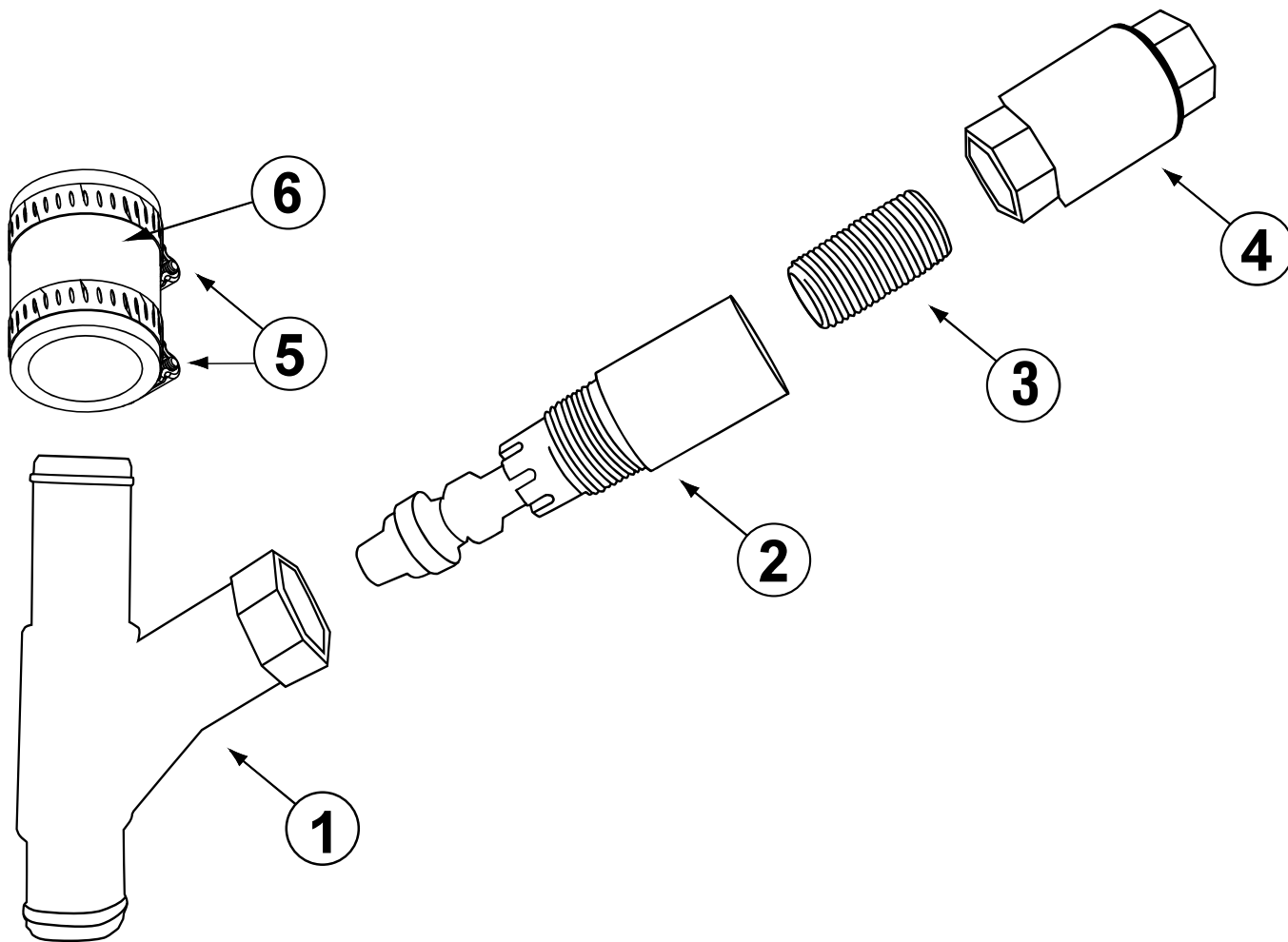


# Parts Manual

**Drain Water Tempering Valve Assembly (Effective 03-2023)**  
**PN13475.00 Factory Installed Kit**  
**PN13476.00 Field Installed Kit**



ITEM NO.	NO. REQ'D	P/N	DESCRIPTION
1	1	13470.86	DTV "Y" fitting
2	1	13470.85	Drain Water Tempering Valve
3	1	00742.00	Nipple Brass 1/2 x 1 1/2
4	1	00715.00	1/2 Ball Check Valve
5	1	03101.00	Hose Clamp Size #16 1
6	1	03108.67	Transfer Hose 1 Reinforced 2