

# FEATURING CMA TEMP-SURE BOOSTER HEATERS

## Features A Hot Water Booster Option for Peace of Mind



Is your Low Temp dishmachine lacking an adequate supply of hot water to assure proper sanitation is taking place in the dishroom? We have the answer - **"CMA TEMP-SURE"**. Rather than replace your existing water heater with something larger and more expensive, add the **"TEMP-SURE"** booster heater to your machine. The **"TEMP-SURE"** is mounted to the side of dishmachine, not requiring any of your valuable kitchen space. The **"TEMP-SURE"** provides an additional 40 degrees of temperature rise to your incoming dishmachine water supply, which will help prevent your existing water supply source from being over burdened. Have **"PEACE OF MIND"** that proper dishware sanitation is taking place and preventing health risks. (Available on most CMA dishmachines).



The **"TEMP-SURE"** can be built-in at the factory, or it can be purchased separately with a field kit for field installation.

\*The **"TEMP-SURE"** requires a separate 208-230v 3 phase or 208-240v 1 phase.



17707 VALLEY VIEW AVENUE  
CERRITOS, CALIFORNIA 90703  
800-854-6417 • 714-898-8781 • FAX 714-895-2141  
www.cmadishmachines.com

CMA  
**ENERGY MIZER**<sup>®</sup>  
Registered Trademark



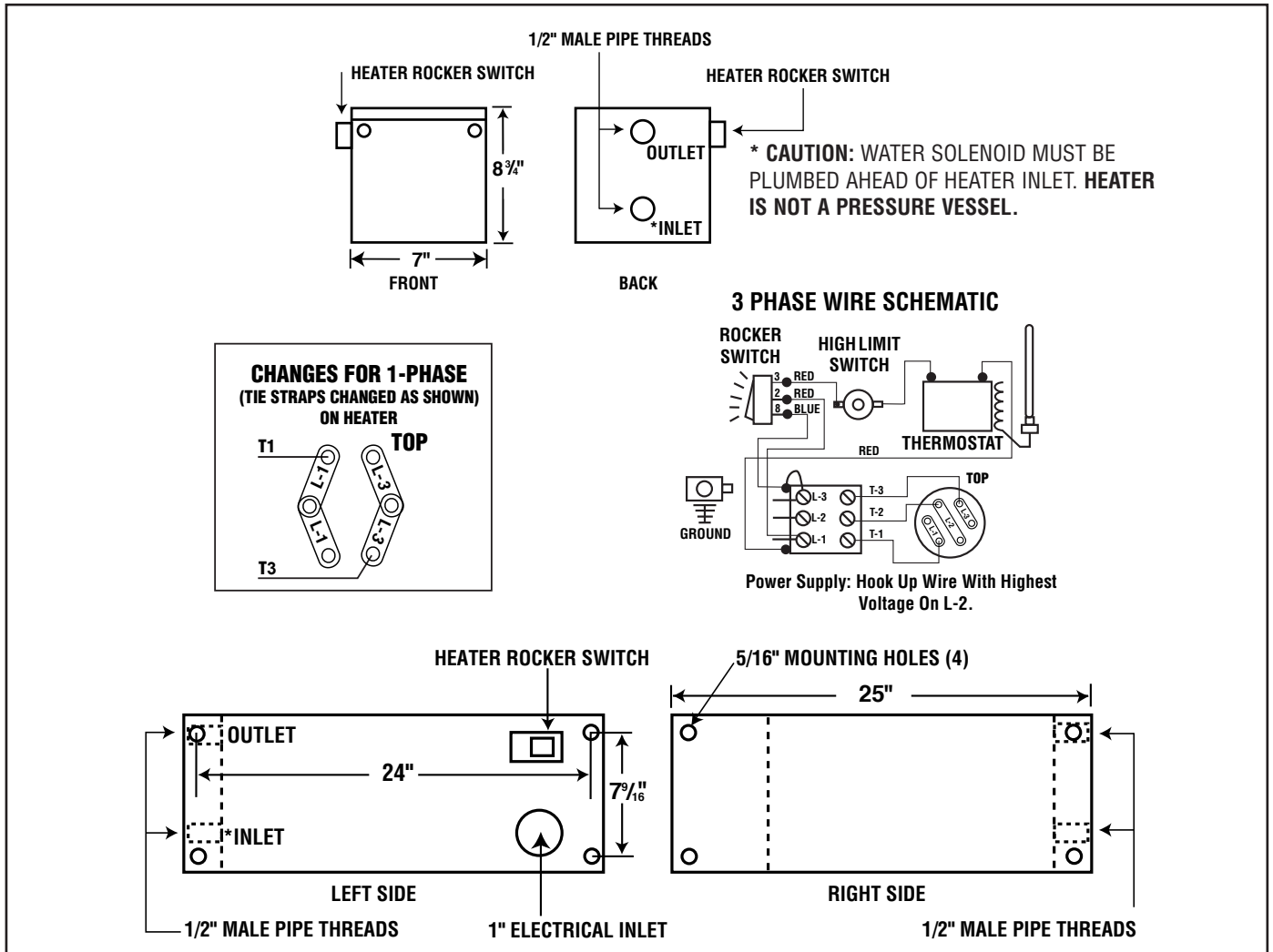


# CMA TEMP-SURE™

Hot Water Assurance System  
For Dump And Fill Style  
Dishwashers

## WARNINGS:

- Electrical and plumbing connections must be made by a qualified service company who will comply with all available Federal, State, and Local Health, Electrical, Plumbing and Safety codes.
- CMA recommends utilizing a water softening system to maintain water hardness measurements of 3.5 gpg (grains per gallon) or less. This will assure maximum results and optimum operation of the dishwasher.



The CMA-Temp-Sure™ option assures a continuous supply of 140°F hot water resulting in excellent dishwasher performance. The heater is custom-designed for fill and dump CMA single tank dishwashers as a factory added option or an infield add-on. The heater will also fit most competitor's single tank dishmachines. Not for sale in Ontario Canada.

**Advisory:** CMA does NOT endorse "Tankless On-Demand" water heaters for use on CMA Dishmachine products. CMA DOES endorse, and highly recommends, the standard "tank" style water heaters, sized properly to handle each particular facility with their water heating requirements.



## SPECIFICATIONS:

MODEL: CMA TEMP-SURE™	USA	METRIC	
MIN. INCOMING WATER TEMP.	100°F	(55°C)	
RISE	40°F	(22°C)	
AVAILABLE HOT WATER	90 GPH	(341LPH)	
HEATER TANK CAPACITY	2.6 GAL	(9.8L)	
ELECTRICAL RATING	VOLTS	PHASE	AMPS
	208	1	44
	240	1	51
	208	3	26
	240	3	30

CMA Dishmachines 17707 VALLEY VIEW AVE; CERRITOS, CA 90703 • 800-854-6417 • 714-898-8781 • Fax: 714-895-2141 • www.cmadishmachines.com

CMA reserves the right to modify specifications or discontinue models without prior notification.

PN: 10108.40

© 4-2019 CMA, Inc.

