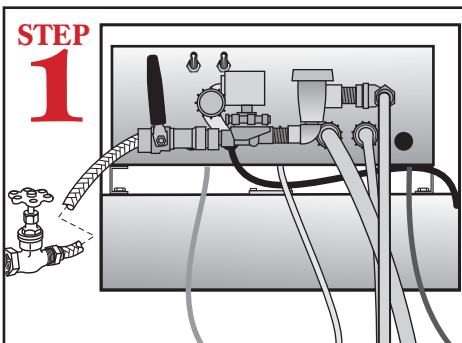
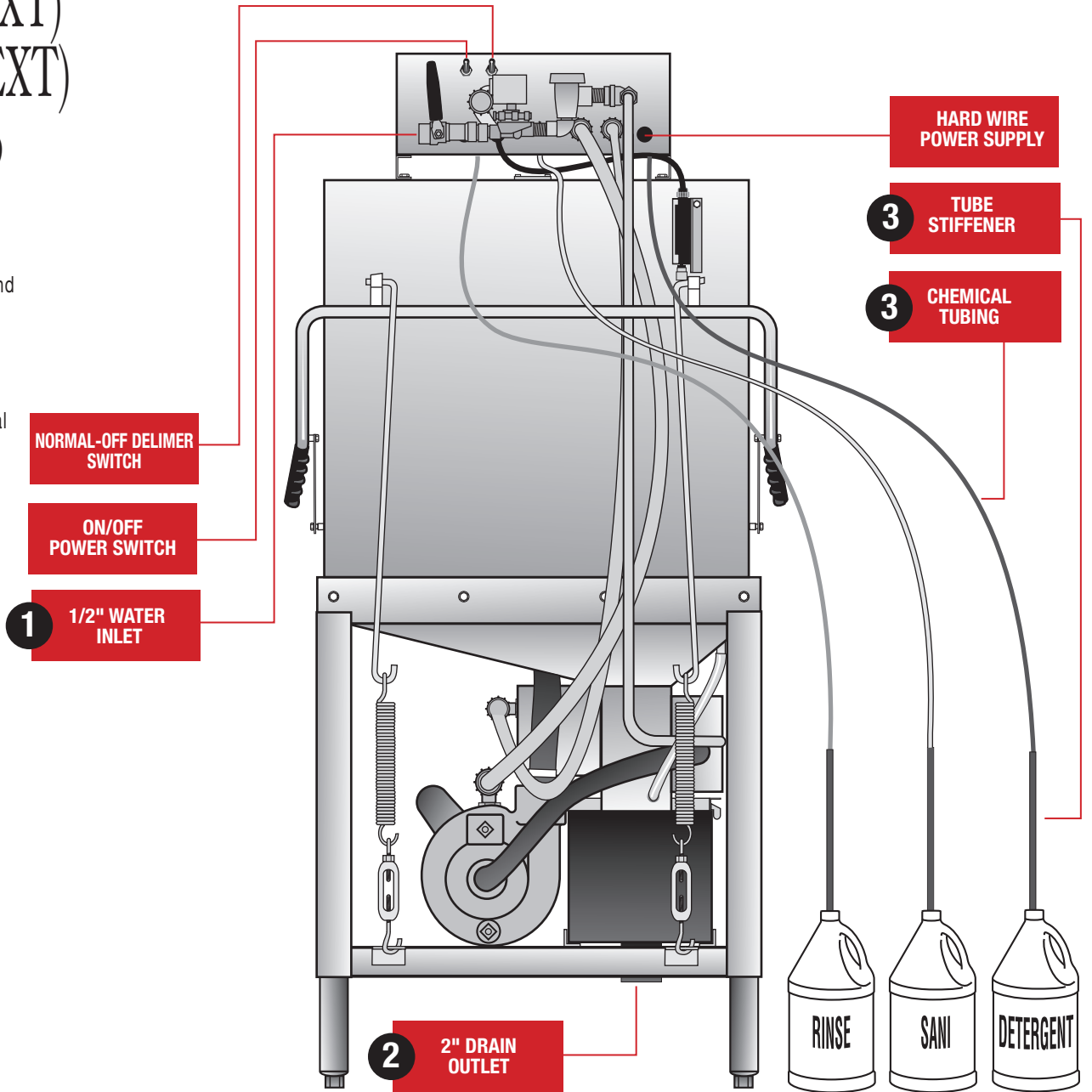


Models EST-AH, EST-C EST-AH-(EXT) & EST-C-(EXT) Quick Setup Instructions

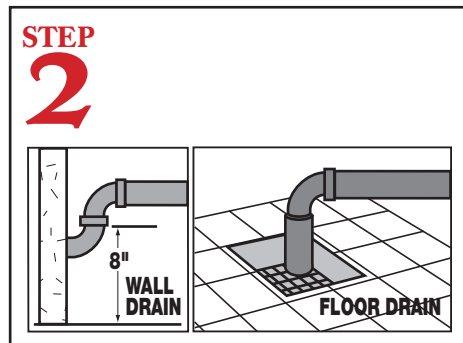
MODEL EST REAR VIEW



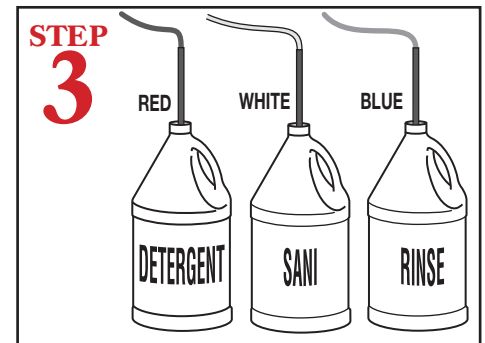
WARNING: Electrical and plumbing connections need to be made by a licensed service person and comply with all Federal, State and Local Health, Electrical, Plumbing and Safety codes.



STEP 1
Connect dishmachine to hot water source recommended 140 temperature (120 minimum temperature required).



STEP 2
Connect a 2" drain pipe (not supplied) from scrap accumulator to floor or wall drain.



STEP 3
Insert tube stiffener with chemical tubing into each corresponding chemical dispensers.