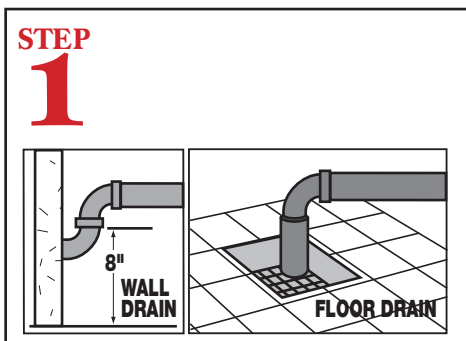
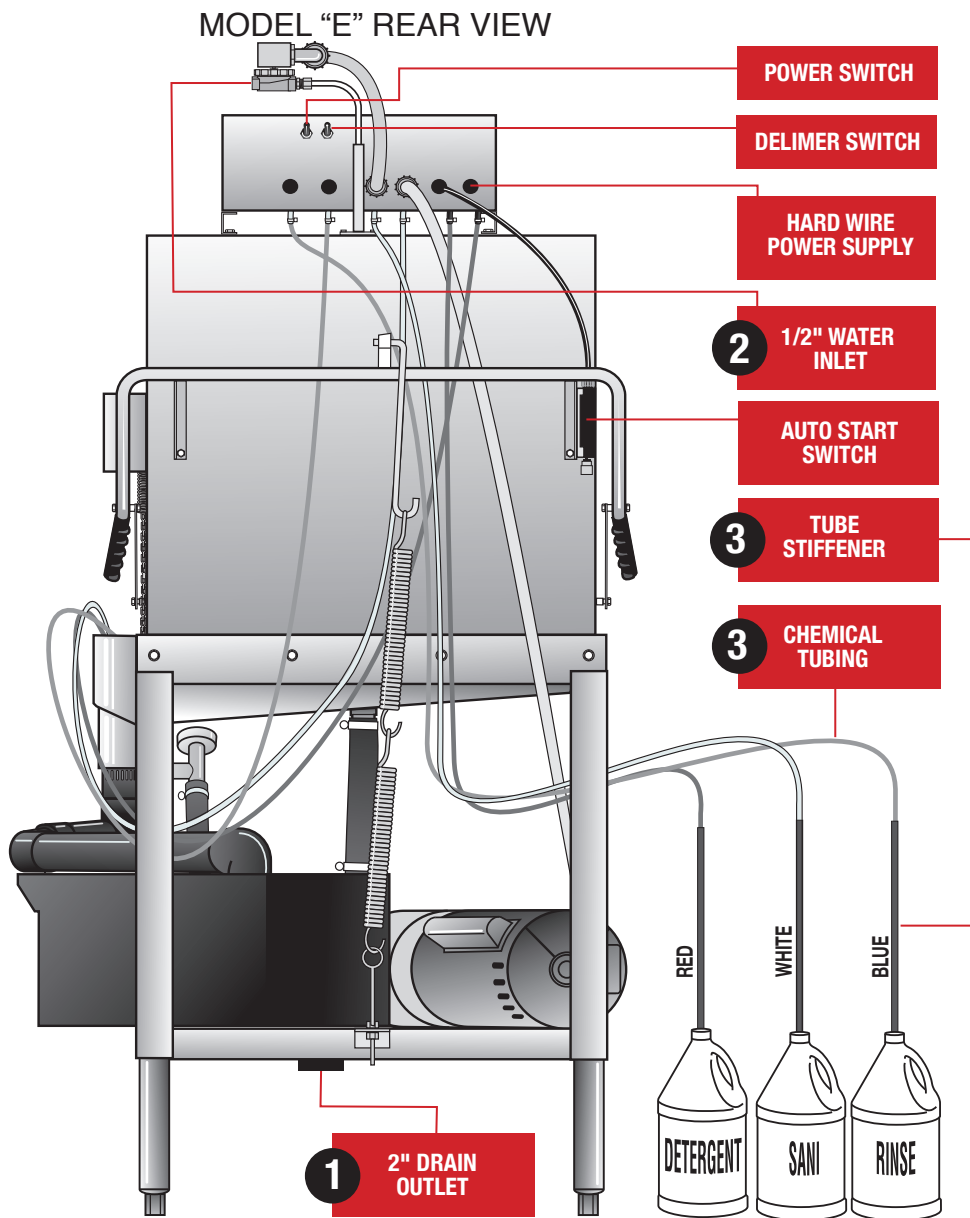


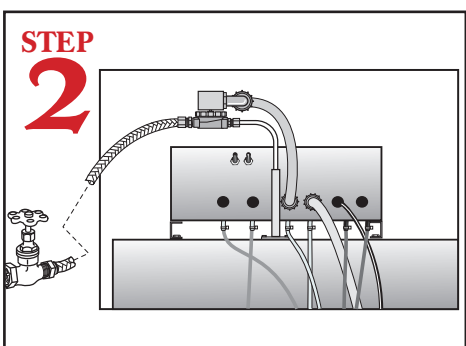
# Models EAH, EC, E 3 Door Quick Setup

## Instructions

**WARNING:** Electrical and plumbing connections need to be made by a licensed service person and comply with all Federal, State and Local Health, Electrical, Plumbing and Safety codes.

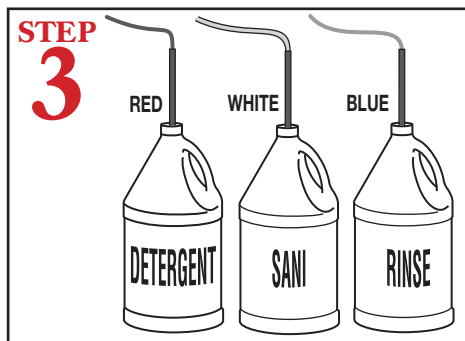


Connect a 2" drain pipe (not supplied) from scrap accumulator to floor or wall drain.



Connect dishmachine to hot water source (minimum 120-140 temperature required).

**NOTE:** The water inlet assembly ships inside the machine. Installer must attach the assembly before connecting water source.



Insert tube stiffener with chemical tubing into each corresponding chemical dispensers.

