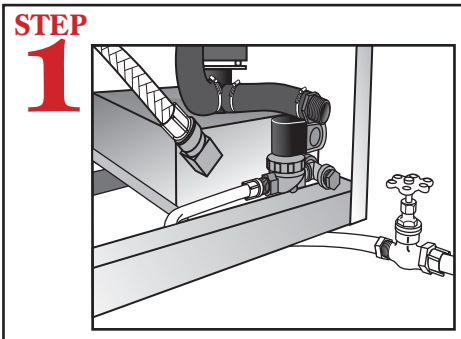
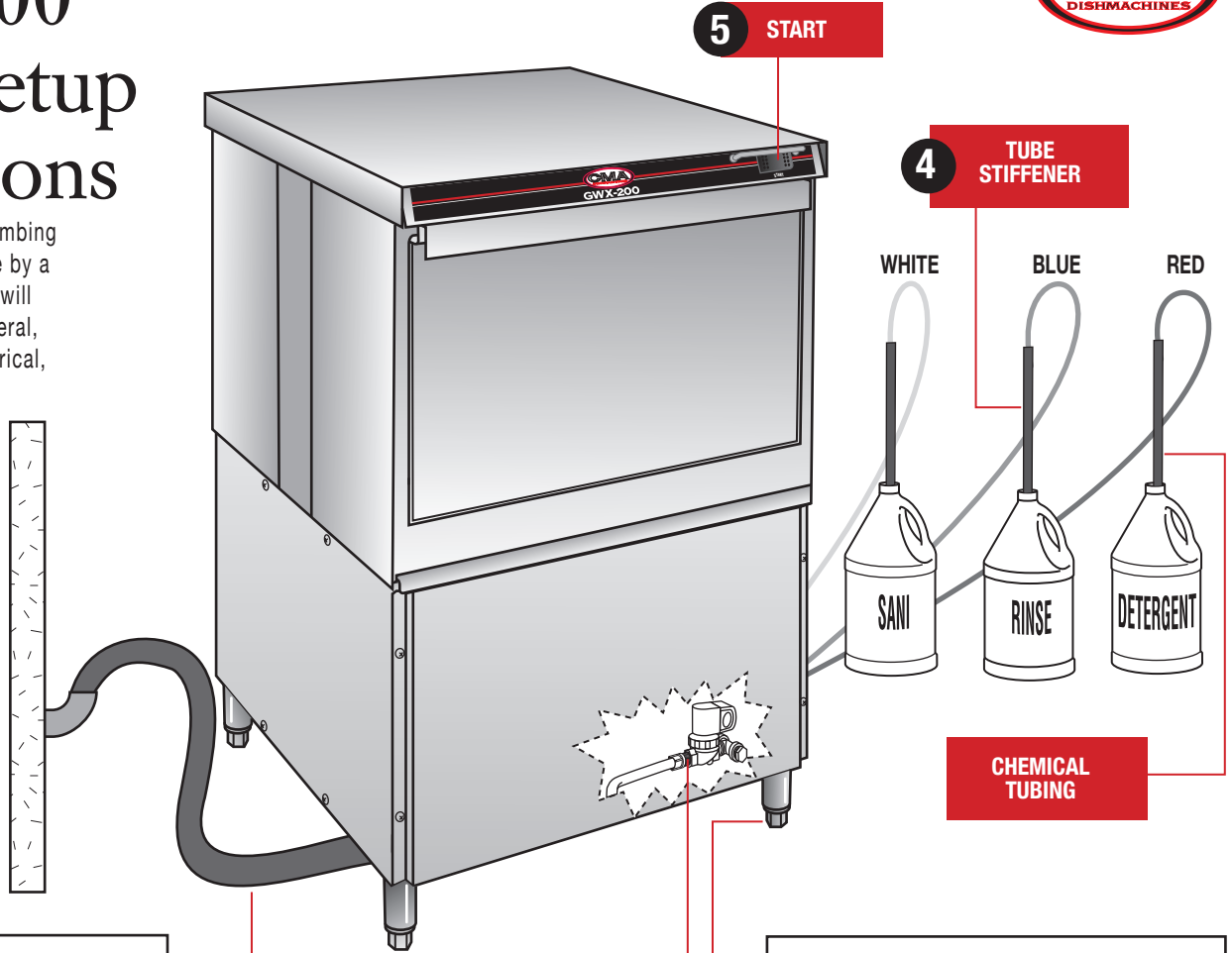


GWX-200 Quick Setup Instructions

WARNING: Electrical and plumbing connections need to be made by a qualified service person who will comply with all available Federal, State and Local Health, Electrical, Plumbing and Safety codes.

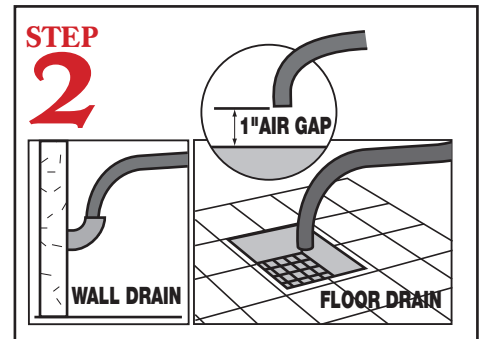


Connect dishmachine to hot water source, recommended 140° (120° minimum temperature required) using a 1/2" connector.

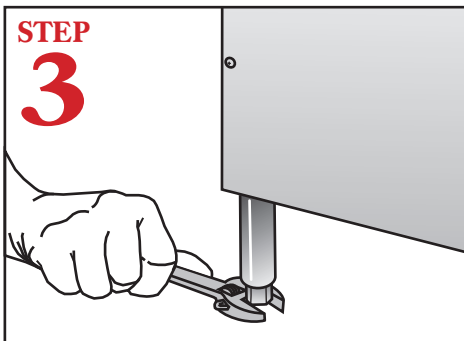
1 1/2" WATER INLET

2 DRAIN

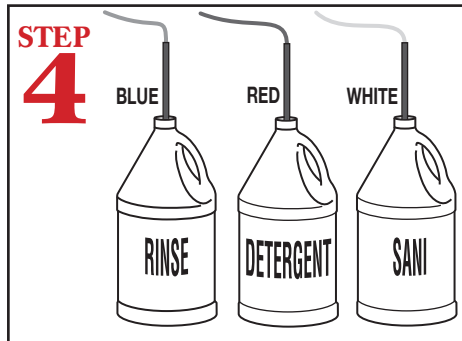
3 LEVELING LEGS



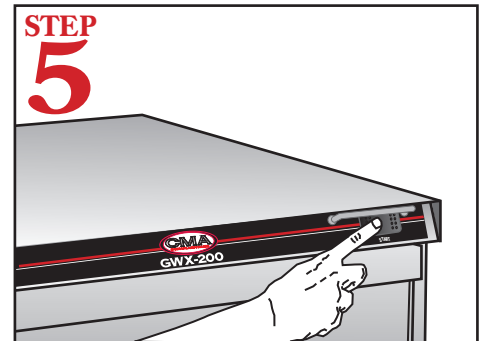
Connect the drain hose to wall or floor drain. The floor drain must have a 1 inch air gap between drain hose and floor drain.



Level dishmachine by adjusting leveling legs. Dishmachine must be level front and back.



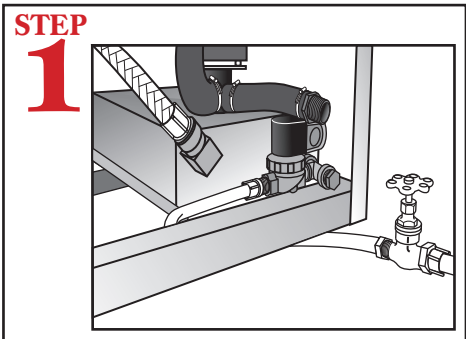
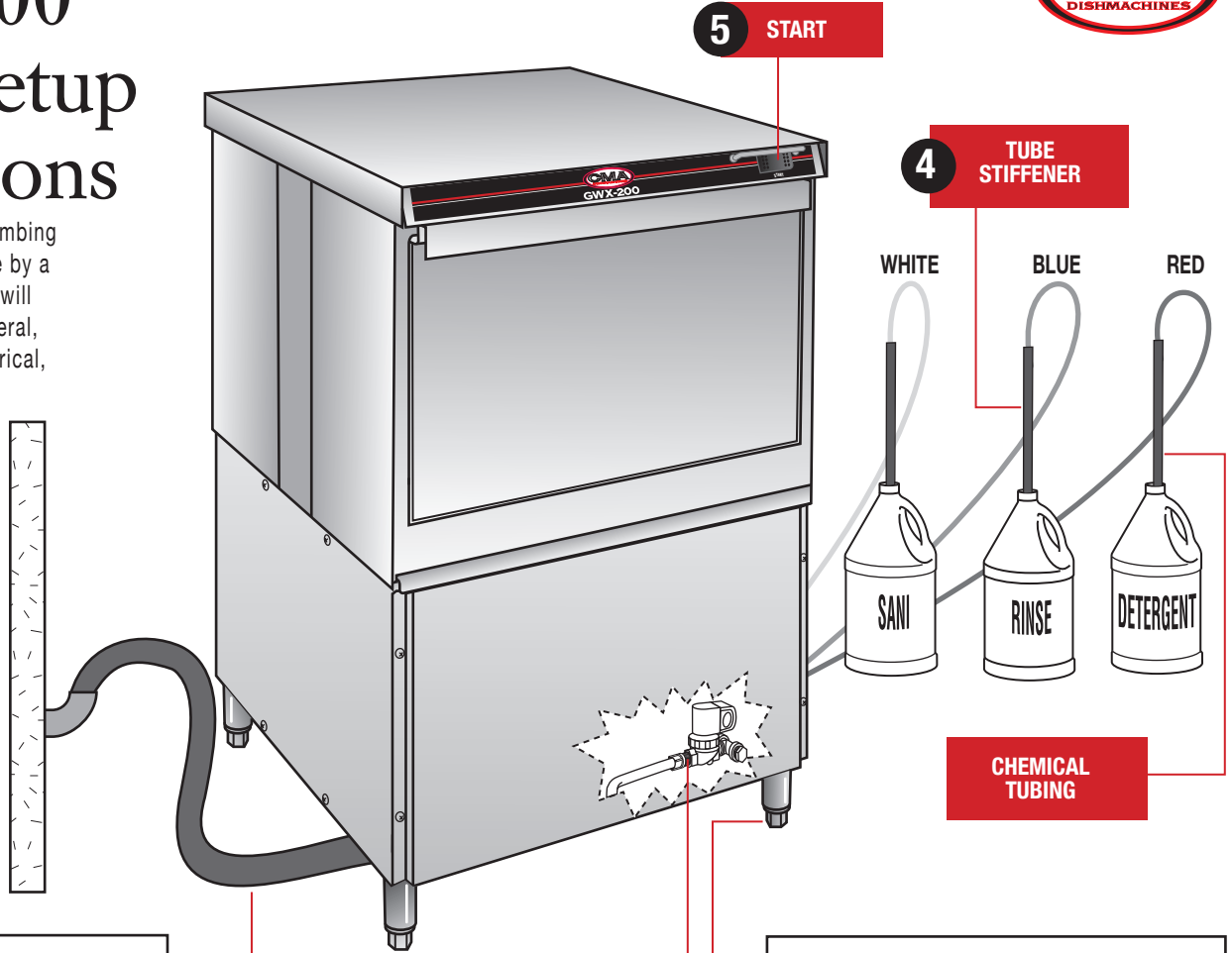
Insert tube stiffener with chemical tubing into corresponding chemical dispensers.



Push the "START" button to activate the dishmachine.

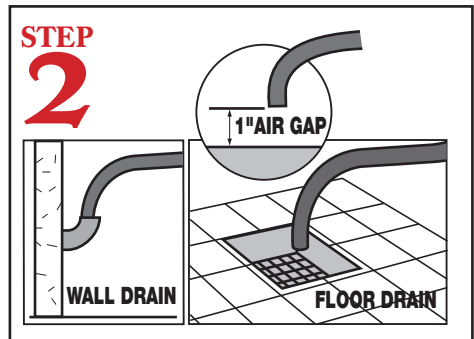
GWX-200 Quick Setup Instructions

WARNING: Electrical and plumbing connections need to be made by a qualified service person who will comply with all available Federal, State and Local Health, Electrical, Plumbing and Safety codes.

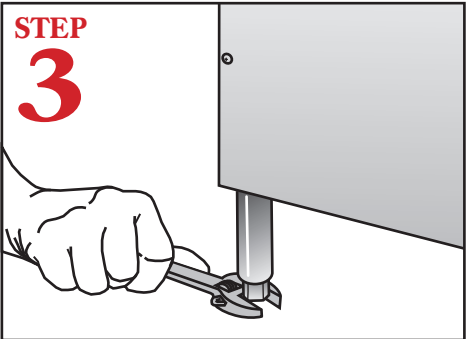


STEP 1
Connect dishmachine to hot water source, recommended 140° (120° minimum temperature required) using a 1/2" connector.

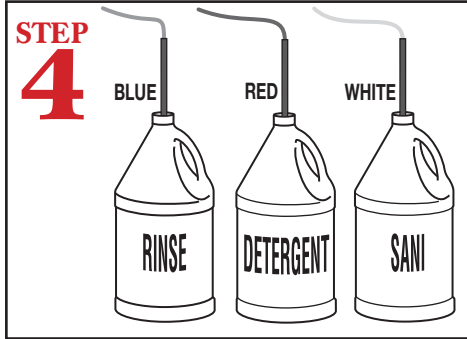
- 1** 1/2" WATER INLET
- 2** DRAIN
- 3** LEVELING LEGS



STEP 2
Connect the drain hose to wall or floor drain. The floor drain must have a 1 inch air gap between drain hose and floor drain.



STEP 3
Level dishmachine by adjusting leveling legs. Dishmachine must be level front and back.



STEP 4
Insert tube stiffener with chemical tubing into corresponding chemical dispensers.



STEP 5
Push the "START" button to activate the dishmachine.