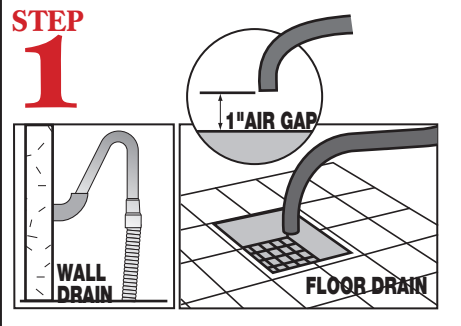
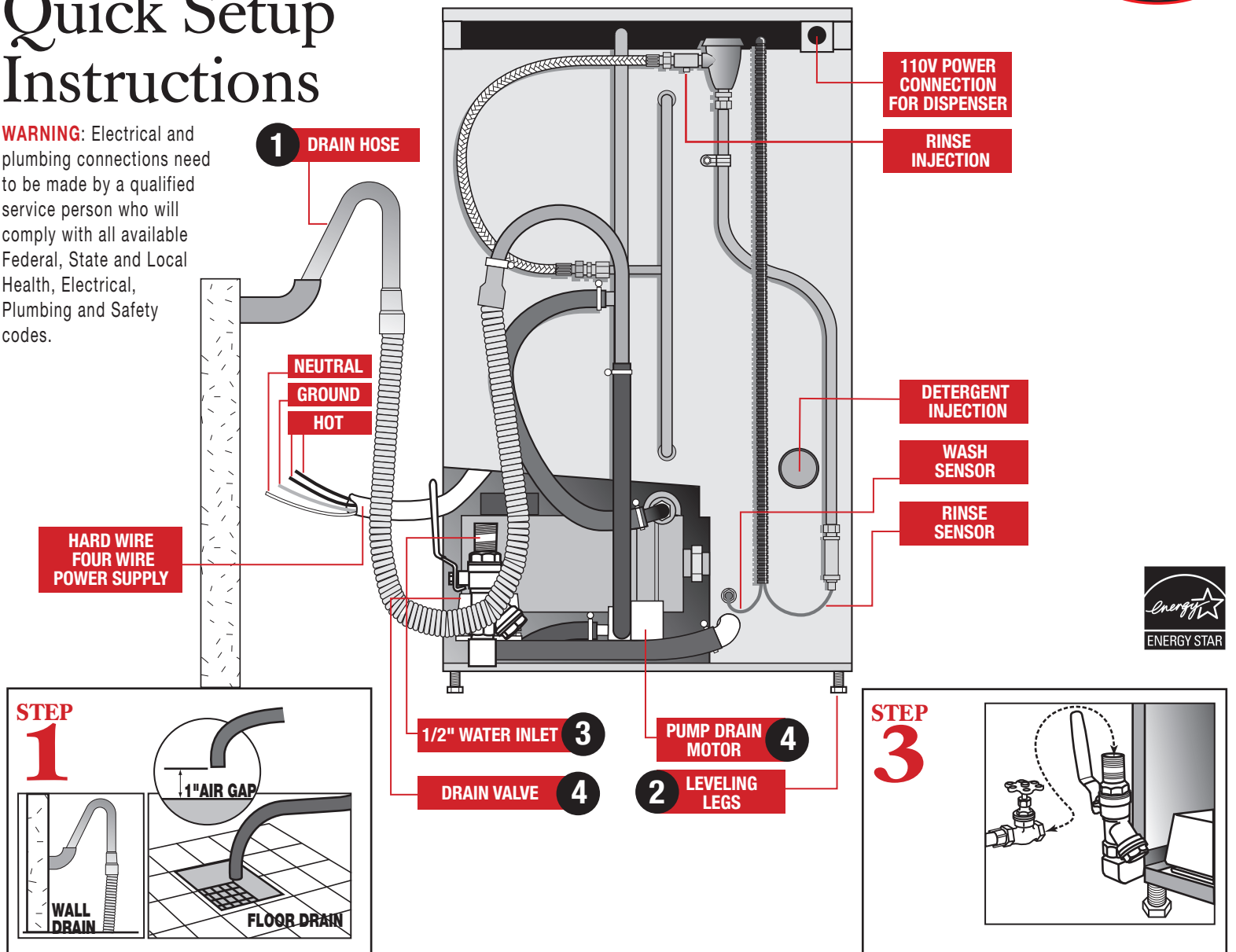


# 180UC

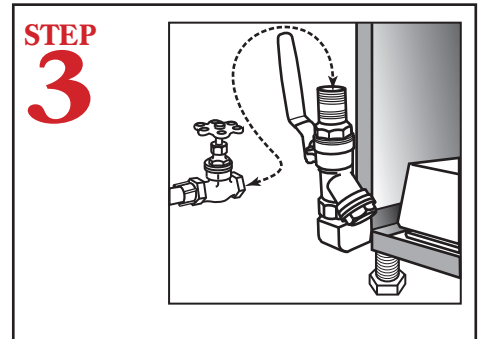
## Quick Setup Instructions



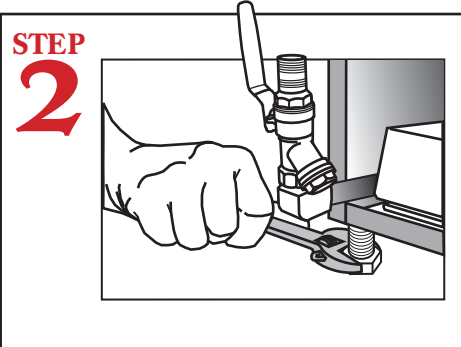
**WARNING:** Electrical and plumbing connections need to be made by a qualified service person who will comply with all available Federal, State and Local Health, Electrical, Plumbing and Safety codes.



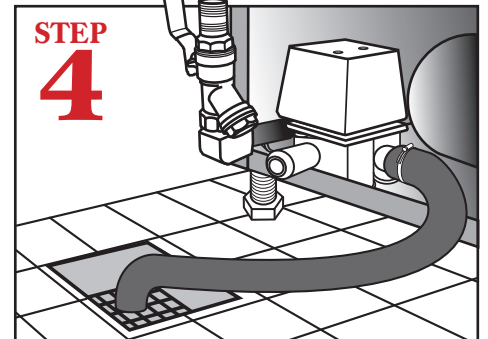
Connect the drain hose to wall or floor drain. The floor drain must have a 1 inch air gap between drain hose and floor drain.



Connect dishwasher to hot water source, minimum temperature 180°F will remain in wash cycle until booster heater temperature reaches 180°F, then it will advance into rinse cycle.



Level dishwasher by adjusting leveling legs. Dishwasher must be level front and back.



When ever possible, **remove pump drain** if a floor drain is available near by. Remove drain pipe and place drain hose on the drain valve and allow machine to gravity drain.

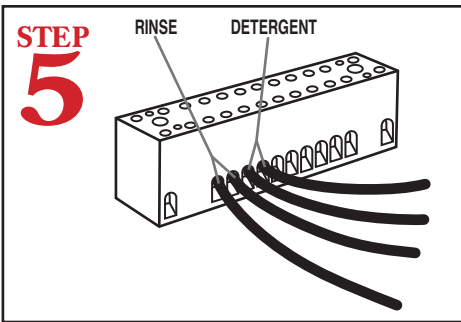
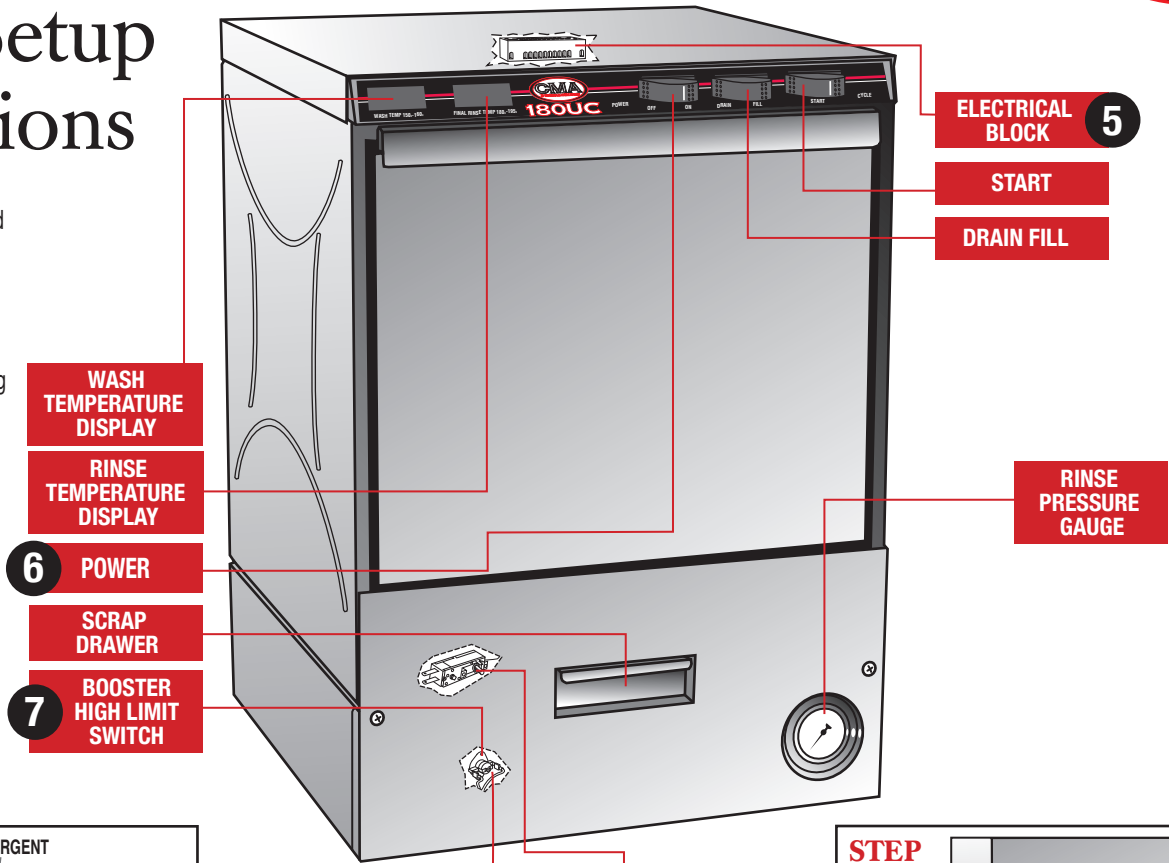
# 180UC

## Quick Setup Instructions

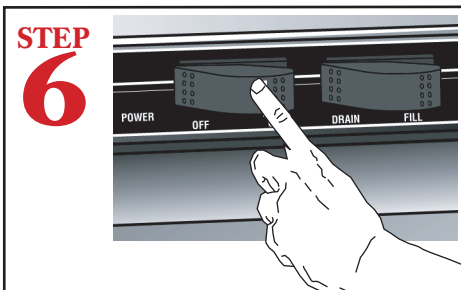
180UC FRONT VIEW



**WARNING:** Electrical and plumbing connections need to be made by a qualified service person who will comply with all available Federal, State and Local Health, Electrical, Plumbing and Safety codes.



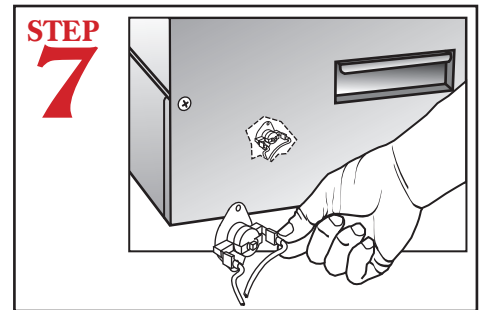
Chemical dispenser electrical hookup is located inside control box. Chemical dispenser is optional. It is not sold with dishmachine.



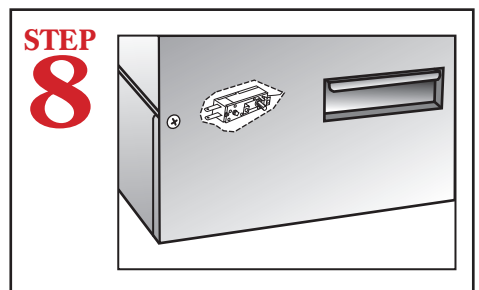
Turn on power and the machine will be automatically filled to correct level.

**7**

**NOTE:** To prevent Heating Element damage, the 180UC heater must be filled with water before the heating element is energized. For this reason the High Liimit Switch has intentionally been disconnected at the factory and will require re-connection.



After filling dishwasher for the first time, (**CAUTION: turn power supply off**) reconnect the factory unplugged wire to booster high-limit switch located behind front panel.



Turn power supply back on. Allow machine to heat up (about 5 minutes). Cycle machine by pushing start switch. Observe "Rinse Cycle" (last 12 seconds of cycle) must be minimum 180°F. If necessary adjust the temperature by turning the adjustment stem clockwise to increase.