

FEATURING CMA TEMP-SURE BOOSTER HEATERS

Features A Hot Water Booster Option for Peace of Mind

Booster Heater



Model E-AH
Also Available as E-Corner

Booster Heater



Model EST
Also Available as Straight or Corner

Booster Heater



Model B (Double)
Also Available as Corner B



Is your Low Temp dishmachine lacking an adequate supply of hot water to assure proper sanitation is taking place in the dishroom? We have the answer - **"CMA TEMP-SURE"**. Rather than replace your existing water heater with something larger and more expensive, add the **"TEMP-SURE"** booster heater to your machine. The **"TEMP-SURE"** is mounted to the side of dishmachine, not requiring any of your valuable kitchen space. The **"TEMP-SURE"** provides an additional 40 degrees of temperature rise to your incoming dishmachine water supply, which will help prevent your existing water supply source from being over burdened. Have **"PEACE OF MIND"** that proper dishware sanitation is taking place and preventing health risks. (Available on most CMA dishmachines).

The **"TEMP-SURE"** can be built-in at the factory, or it can be purchased separately with a field kit for field installation.

*The **"TEMP-SURE"** requires a separate 208-230v 3 phase 40 amp power supply.



12700 KNOTT STREET
GARDEN GROVE, CALIF. 92841
800-854-6417 • 714-898-8781 • FAX 714-895-2141
www.cmadishmachines.com

CMA
Energy MIZER[®]
Registered Trademark



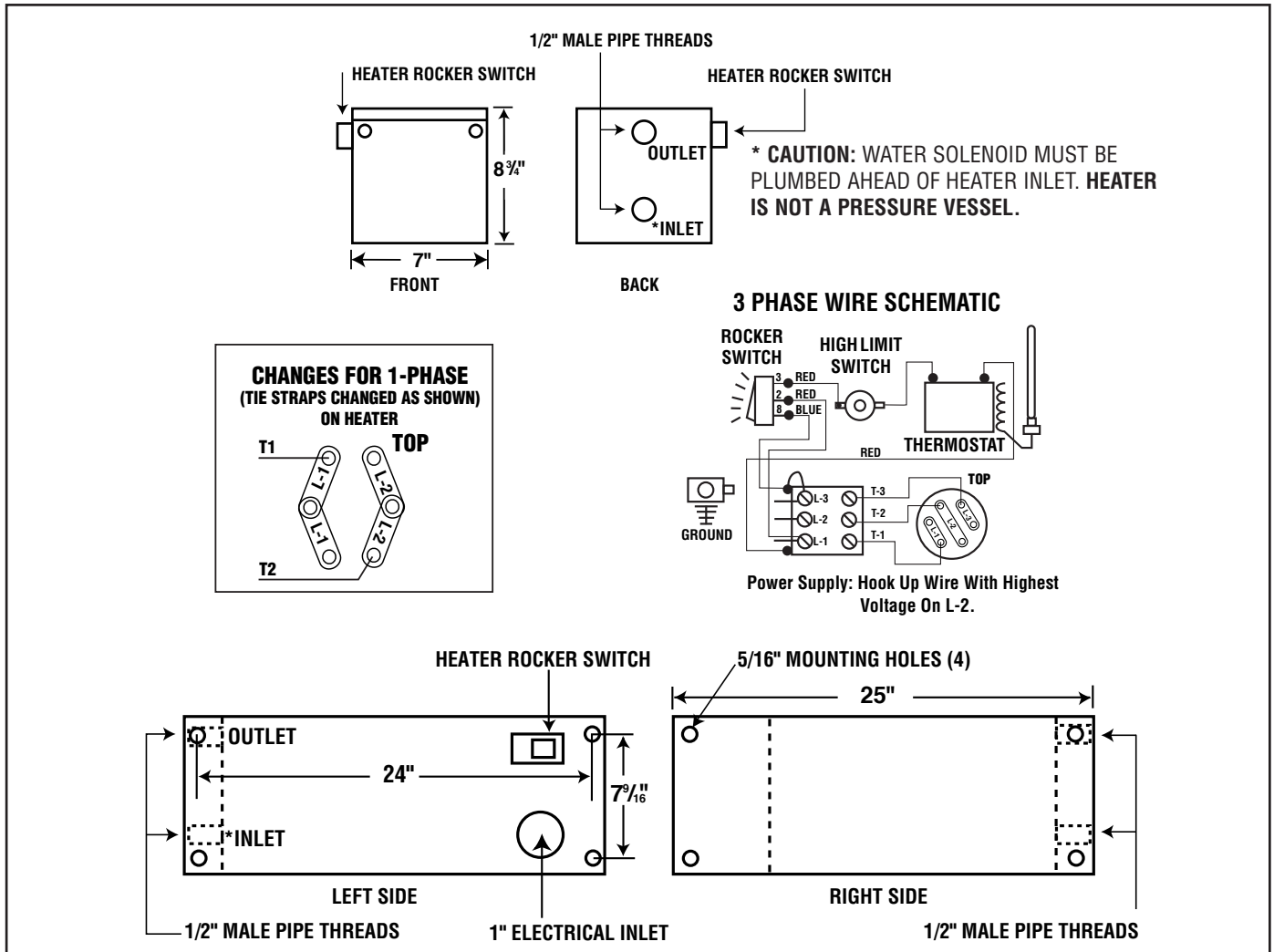


CMA TEMP-SURE™

Hot Water Assurance System
For Dump And Fill Style
Dishwashers

WARNINGS:

- Plumbing connections must be made by a qualified service company who will comply with all available Federal, State, and Local Health, Plumbing and Safety codes.
- CMA recommends utilizing a water softening system to maintain water hardness measurements of 3.5 gpg (grains per gallon) or less. This will assure maximum results and optimum operation of the dishwasher.



The CMA-Temp-Sure™ option assures a continuous supply of 140°F hot water resulting in excellent dishwasher performance. The heater is custom-designed for fill and dump CMA single tank dishwashers as a factory added option or an infield add-on. The heater will also fit most competitor's single tank dishwashers.

Advisory: CMA does NOT endorse "Tankless On-Demand" water heaters for use on CMA Dishmachine products. CMA DOES endorse, and highly recommends, the standard "tank" style water heaters, sized properly to handle each particular facility with their water heating requirements.



SPECIFICATIONS:

MODEL: CMA TEMP-SURE™	USA	METRIC	
MIN. INCOMING WATER TEMP.	100°F	(55°C)	
RISE	40°F	(22°C)	
AVAILABLE HOT WATER	90 GPH	(341LPH)	
HEATER TANK CAPACITY	2.6 GAL	(9.8L)	
ELECTRICAL RATING	VOLTS	PHASE	AMPS
	208	1	44
	240	1	51
	208	3	26
	240	3	30

CMA Dishmachines 12700 Knott Street, Garden Grove CA 92841 • 800-854-6417 • 714-898-8781 • Fax: 714-895-2141 • www.cmadishmachines.com

CMA reserves the right to modify specifications or discontinue models without prior notification.

PN: 10108.40

© 1-2017 CMA, Inc.

an Ali Group Company

