

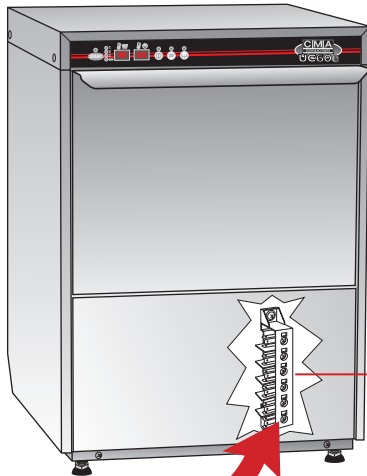
UC60e

Quick Setup Instructions



800-854-6417

WARNING: Electrical and plumbing connections need to be made by a qualified service person who will comply with all available Federal, State and Local Health, Electrical, Plumbing and Safety codes.



ELECTRICAL BLOCK 1

CLEAR TUBE

GREEN TUBE

THE GREEN AND CLEAR CHEMICAL FEED LINES ARE SHIPPED INSIDE THE BACK OF THE DISHWASHER. REMOVE THE FILTER AND FEED THE LINES THROUGH THE RUBBER PROTECTIVE GROMMETS AT THE BOTTOM REAR LEFT-HAND CORNER OF THE DISHWASHER.

1/2" WATER INLET 4

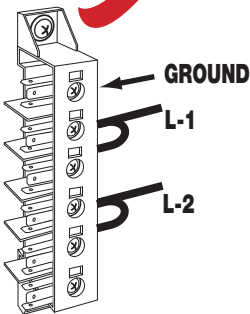
LEVELING LEGS 3

ELECTRICAL INLET

DRAIN 2

TO PRIME CHEMICAL PUMPS ALLOW THE DISHWASHER TO RUN 3 TO 4 CYCLES WITH THE CHEMICAL LINES IN THE CONTAINERS.

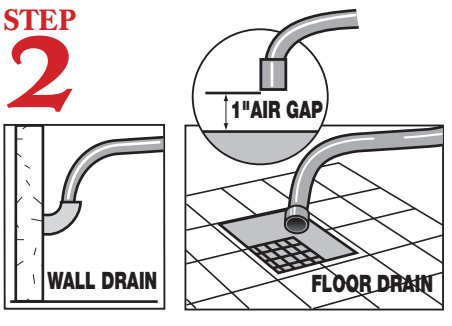
STEP 1



208/230V

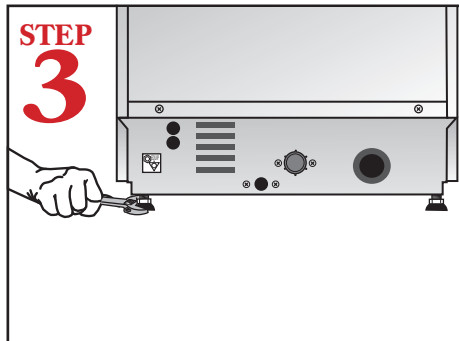
Connect Main power lines L-1 & L-2, and Ground to the proper terminals, located on electrical block inside the front panel. After connecting main power, make sure all terminals, "used" and "unused" on the block, are tight.

STEP 2



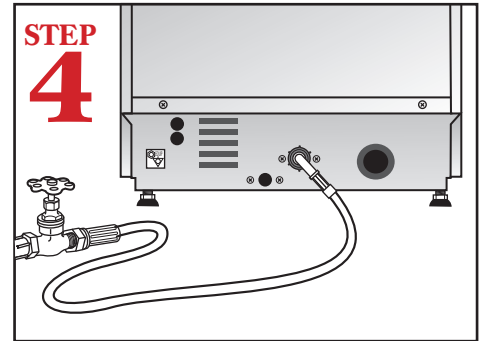
Connect the drain hose to wall or floor drain. The floor drain must have a 1-inch air gap between drain hose and floor drain.

STEP 3



Level dishmachine by adjusting "leveling legs". Dishmachine must be level, front and back, to ensure proper performance and prevent door leaks.

STEP 4



Connect dishmachine to hot water source, recommended 140°F.

UC60e

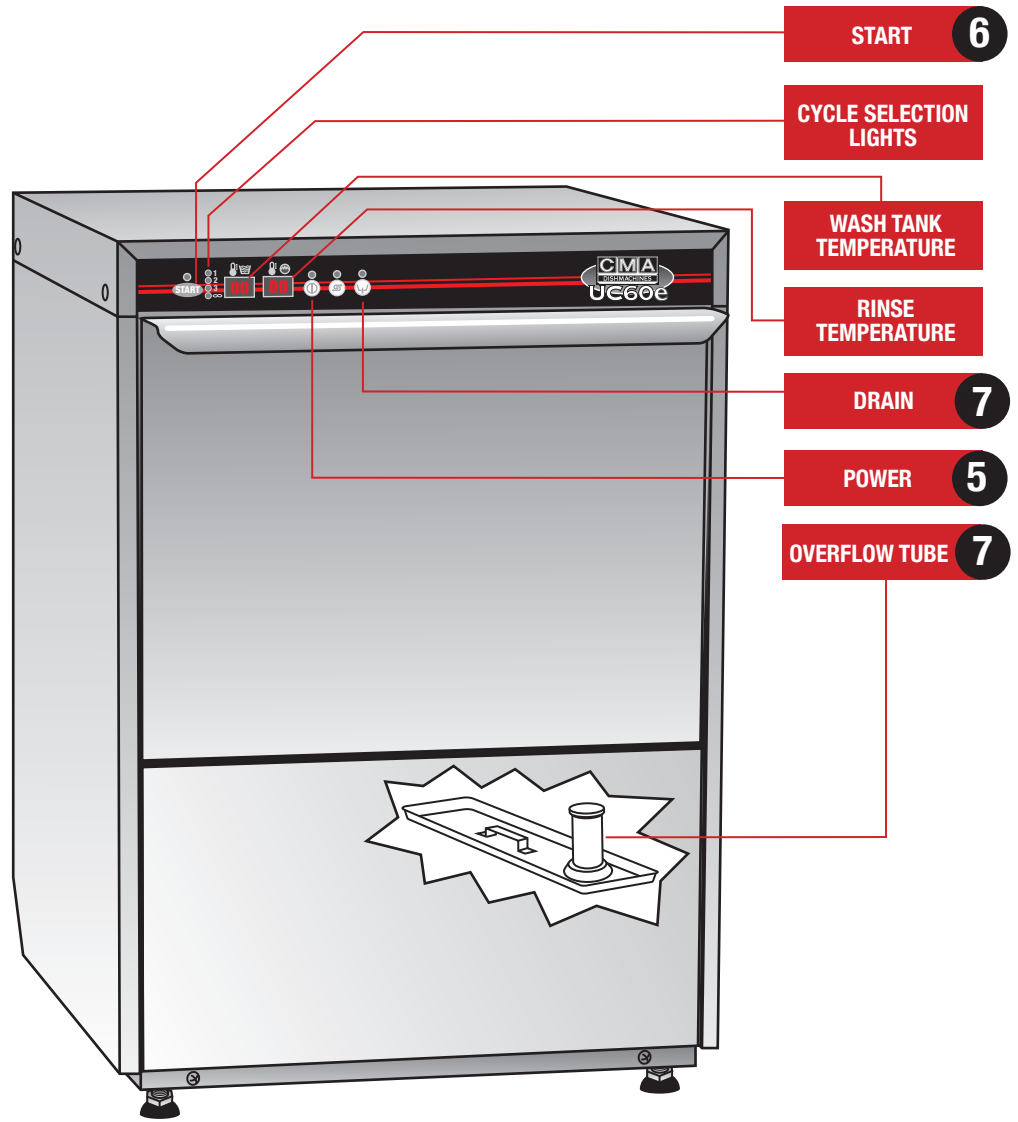
Quick Setup Instructions



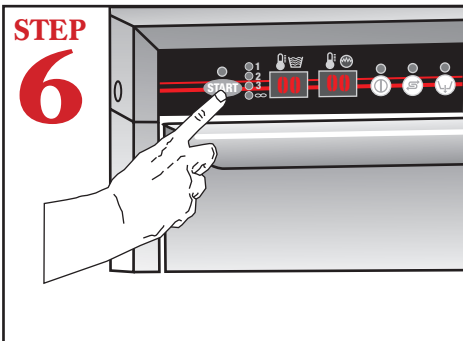
800-854-6417

WARNING: Electrical and plumbing connections need to be made by a qualified service person who will comply with all available Federal, State and Local Health, Electrical, Plumbing and Safety codes.

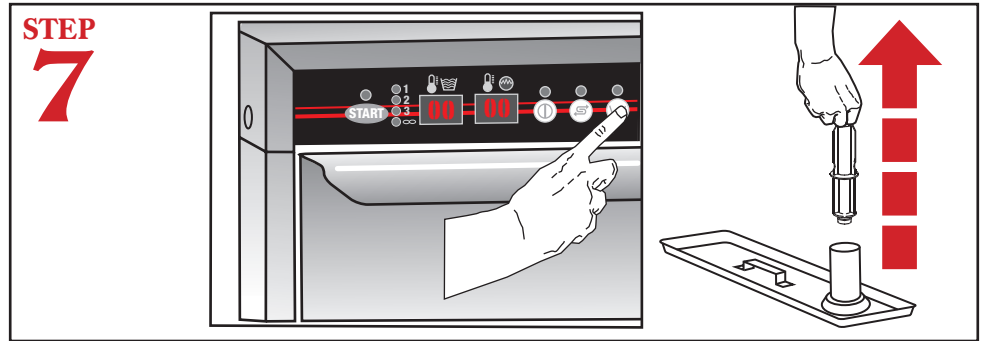
CAUTION!
WATER SUPPLY MUST NOT EXCEED 150 DEGREES. OTHERWISE, "VAPOR" WILL CAUSE ELECTRONIC COMPONENT DAMAGE!



To initially fill dishwasher with water, push and hold the power button until water valve activates; then release and the unit starts filling with water.



To start cycle press START button. To change cycle press and hold START button for 5 seconds. Total cycles 60/120/180/300 seconds.



To drain the dishwasher, turn the main power off; the light will turn orange. Open the front door and remove the overflow drain-stopper. Press and hold the drain button for three seconds or until the drain pump activates. Allow the dishwasher to drain; the unit will turn off when done. Note: do not drain the dishwasher without the scrap screen in place.